

# PSA Oxygen Generator

# AS-E



AirSep Alpha Series Oxygen Generators produce from 20 to 5,500 cubic feet of oxygen per hour at up to 95% oxygen concentration. When electricity and a source of compressed air is supplied, these dependable machines can provide oxygen for practically any application.

## Features

- Produces oxygen from an independent compressed air source
- Microprocessor controlled
- Low operating cost
- Automatic and unattended operation
- Easy to install and maintain
- Optional NEMA 4 Touchscreen control panel with integrated oxygen concentration monitor

## Typical Applications

### Manufacturing

- Cutting/Brazing/Soldering
- Thermal/Chemical Oxidation
- Glass Work/Blowing

### Medical

- Hospital Systems

### Environmental

- Ozone (Generator) Feed Gas
- Environmental Remediation
- Waste/Water Treatment

### Additional

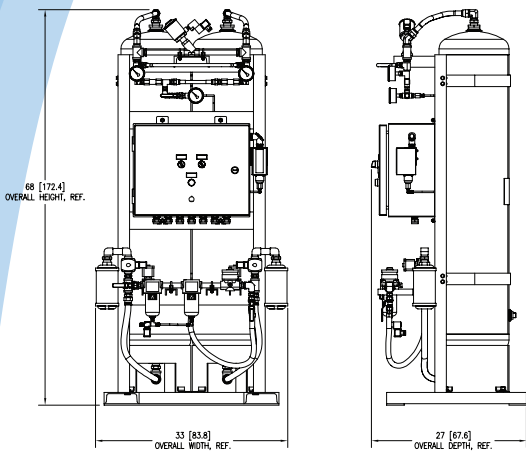
- Fish Farming

## Specifications

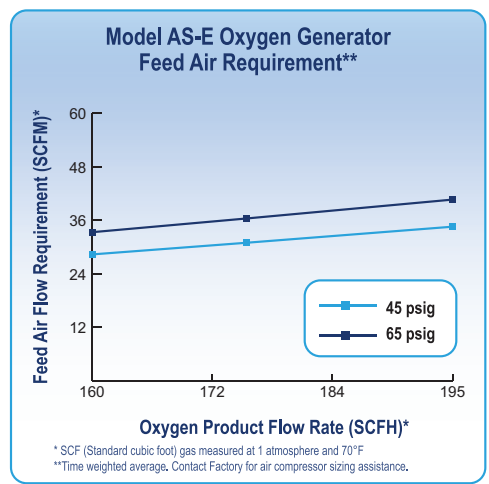
Product Flow	160 – 195 SCFH (4.21 – 5.13 Nm <sup>3</sup> /hr or 75 – 92 LPM) <sup>1</sup>
Product Pressure	45 – 65 psig (310 – 448 kPa or 3.0 – 4.4 barg) <sup>1</sup>
Product Concentration	Up to 95%
Product Dew Point	-100°F (-73°C)
Dimensions (W x D x H) (Nominal)	33 x 27 x 68 in (84 x 69 x 173 cm)
Weight	721 lb (327 kg)
Physical Connections <sup>2</sup>	
Compressed Air Inlet	½" FNPT
Product Gas Outlet	¾" FNPT
Ambient Operating Conditions	Locate the oxygen generator in a well-ventilated area that is protected from weather elements and remains between 40°F (4°C) and 104°F (40°C)
Feed Air Requirements	Flow Rate: <i>Refer to chart on reverse page.</i> Clean and Dry "Plant Air" (Class 5.6.4 per ISO 8573.1) Pressure: 90 psig (621 kPa or 6.2 barg) minimum Temperature: 122°F (50°C) maximum
Control Power Requirements (Single Phase)	120 V ~ ±10%, 50/60 Hz, 3.0 A or 220 V ~ ±10%, 50/60 Hz, 1.0 A
NRTL Certifications and Approvals	China Pressure Vessel, ASME Section VIII Division 1, CAN/CSA-C22.2 No. 61010-1-12, ANSI/UL Std. No. 61010-1:2012 (for 120 V configurations only)
<b>60 Gallon Oxygen Receiver</b>	
Dimensions (Dia. x H)	26 x 52 in (65 x 131 cm)
Weight	159 lb (72 kg)

<sup>1</sup> SCF (Standard cubic foot) gas measured at 1 atmosphere and 70°F / Nm<sup>3</sup> (Normal cubic meter) gas measured at 1 atmosphere and 0°C / LPM (Liters per minute) gas measured at 1 atmosphere and 21°C

<sup>2</sup> Hose and applicable adapters included with optional Factory-supplied accessory kits.



Note: All dimensions are nominal.



## Ordering Information

Model	Part Number	Description
AS-E	AS103-1	120 V ~ ±10%, 50/60 Hz <sup>1</sup>
	AS103-2	220 V ~ ±10%, 50/60 Hz <sup>1</sup>
	AS103-3	With NEMA 4 Pressure Switch, 120 V ~ ±10%, 50/60 Hz <sup>1</sup>
	AS103-4	With NEMA 4 Pressure Switch, 220 V ~ ±10%, 50/60 Hz <sup>1</sup>
	AS103-7	With HMI NEMA 4 Touchscreen and oxygen concentration monitor, 120 V ~ ±10%, 50/60 Hz <sup>1</sup>
	AS103-8	With HMI NEMA 4 Touchscreen and oxygen concentration monitor, 220 V ~ ±10%, 50/60 Hz <sup>1</sup>
	AS103-9	With CE Approved Vessels, 220 V ~ ±10%, 50/60 Hz <sup>1</sup>
	AS103-10	With NEMA 4 Pressure Switch/ Local Remote ON/OFF, 120 V ~ ±10%, 50/60 Hz <sup>1</sup>
	AS103-11	With NEMA 4 Pressure Switch/ Local Remote ON/OFF, 220 V ~ ±10%, 50/60 Hz <sup>1</sup>
	AS103-12	With oxygen concentration monitor (LED indicator), 120 V ~ ±10%, 50/60 Hz <sup>1</sup>
	AS103-13	With oxygen concentration monitor (LED indicator), 220 V ~ ±10%, 50/60 Hz <sup>1</sup>
	AS103-16	With China Approved Vessels, 220 V ~ ±10%, 50/60 Hz <sup>1</sup>
	Required Accessories	TA150-1
KI412-1		Accessory Kit (interconnecting hoses/fittings and oxygen regulator)
TA133-1		60 Gallon Oxygen Receiver, CE-PED
Optional Accessories	KI412-2	Accessory Kit (HMI, interconnecting hoses/fittings, oxygen regulator and oxygen filter)
	KI412-3	Accessory Kit (HMI, interconnecting hoses/fittings, isolation valve with oxygen regulator and oxygen filter)
	KI475-1	Accessory Kit (10 ft stainless braided oxygen hose - from oxygen regulator to use point)
	KI404-2	Accessory Kit (manual switch-over manifold for cylinder backup)
	KI375-2	Carbon Filter Add-On Kit
	AN021-1	Oxygen Analyzer (Maxtec Handi)
	AN005-1	Oxygen Analyzer (Maxtec Max O <sub>2</sub> Plus)
AN075-1	Oxygen Analyzer/Sensor (Maxtec Max O <sub>2</sub> Plus)	

Shipping Information	AS-E	60 Gallon Oxygen Receiver
Class	92.5	70
Commodity Classification Number	8421.39.8040	7311.00.0000
Dimensions (W x D x H)	34 x 41 x 85 in (86 x 104 x 216 cm) with Accessory Kit(s), Crated 34 x 41 x 85 in (86 x 104 x 216 cm) with Accessory Kit(s) and CE Beds, Crated 38 x 86 x 37 in (97 x 218 x 94 cm) with CE Beds, Horizontal	28 x 30 x 56 in (71 x 76 x 142 cm)
Gross Weight	885 lb (401 kg) with Accessory Kit(s), Crated 916 lb (415 kg) with Accessory Kit(s) and CE Beds, Crated 1,099 lb (499 kg) with CE Beds, Horizontal	177 lb (80 kg)

### Warranty: 1 Year Parts and Factory Labor\*\*\*

\*\*\* An unprotected or inadequately ventilated environment, or improper control power may cause damage to the oxygen generator not covered under warranty.

<sup>1</sup> Specify oxygen flow and pressure at time of order.

All performance ratings based on an ambient temperature up to 100°F (38°C), up to 1,000 feet elevation, and 80% relative humidity.



© 2019 AirSep Corporation. All Rights Reserved.  
 AirSep reserves the right to discontinue its products, or change the prices, materials, equipment, quality, descriptions, specifications and/or processes to its products at any time without prior notice and with no further obligation or consequence. Any rights expressly stated herein are reserved by us, as applicable.



260 Creekside Drive  
 Buffalo, NY 14228-2075 U.S.A.  
 Tel: (716) 691-0202 ■ Fax: (716) 691-1255  
 www.airsepcpd.com ■ info@airsep.com  
 ML-IND0012 E